

How to configure ONVIF protocol

Notes: ONVIF is disabled by default in version 5.5.0, even the device is updated from old version that ONVIF is enabled.

On the web interface :

Steps:

1. Go to Configuration→Network→Advanced settings→ Integration Protocol and enable Onvif.

SNMP FTP Email HTTPS QoS 802.1x **Integration Protocol**

Enable Hikvision-CGI

Hikvision-CGI Authentica...

Enable ONVIF

User List			Add	Modify	Delete
No.	User Name	Level			

2. Click to input User Name and Password, which Media User, Operator and Administrator are selectable. The maximum number of users is up to 32. Please note that user management system in ONVIF is independent from user management system in device.

Add user ✕

User Name ✓

Password ✓

Valid password range [8-16]. You can use a combination of numbers, lowercase, uppercase and special character for your password with at least two kinds of them contained.

Confirm ✓

Level

Media user

Operator

Administrator

Notes: The user permissions for ONVIF are set according to the ONVIF protocol document, the default permissions document specifies as follows:

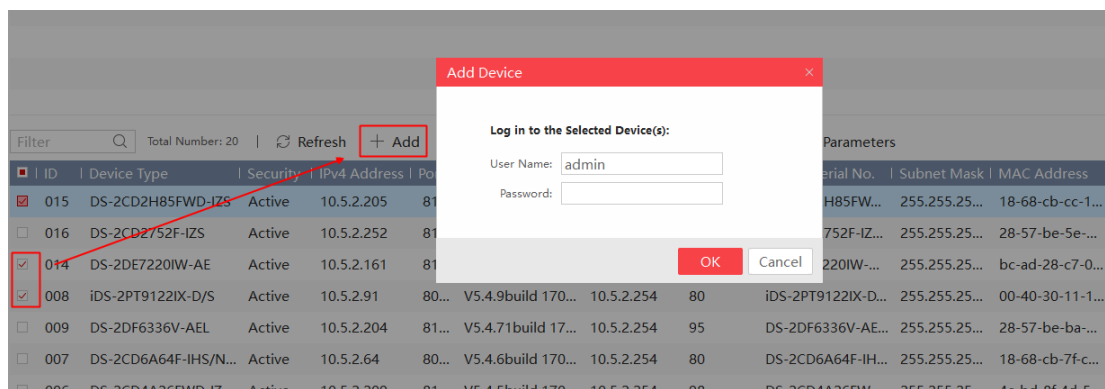
• **Table 7 Default Access Policy Definition**

	Administrator	Operator	User	Anonymous
PRE_AUTH	X	X	X	X
READ_SYSTEM	X	X	X	
READ_SYSTEM_SENSITIVE	X	X		
READ_SYSTEM_SECRET	X			
WRITE_SYSTEM	X			
UNRECOVERABLE	X			
READ_MEDIA	X	X	X	
ACTUATE	X	X		

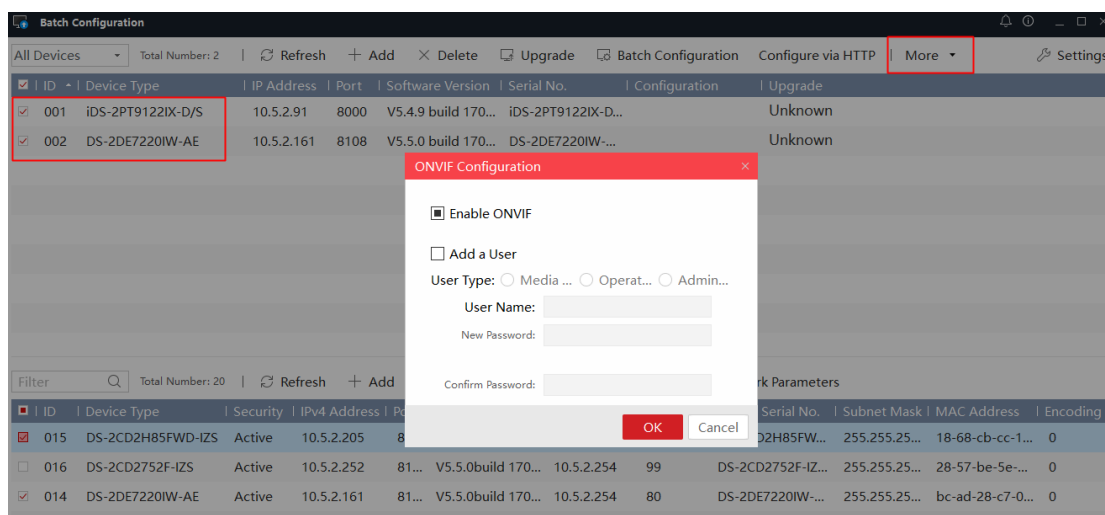
On the BatchConfigTool client :

Steps:

1. Open BatchConfigTool client, and select the online devices in the LAN and click **+ Add** to add them to the client.



2. Select added devices on the client, click **More** ▾ comboBox and go into the ONVIF configuration interface.



3. On the ONVIF configuration interface, you can enabling ONVIF and set user type that you want.

NOTES: For BatchConfigTool client, it supports batch setting ONVIF protocol. However, it needs to be set one by one on the web interface.

First Choice for Security Professionals
***HIKVISION* Technical Support**